

Kalem II LED Emergency Exit Sign

Please read these instructions thoroughly before use and retain for future reference.

Products Covered:
KAL201

The Kalem II LED Emergency Exit Sign is a maintained or non-maintained emergency luminaire for surface mounting.

Safety Information

- Installation must be carried out in accordance with national building and wiring regulations.
- If you are in any doubt about installing this product, please consult a qualified electrician.
- Before commencing installation or servicing, turn off and isolate the circuit to be worked on by removing the fuse or switching the circuit breaker off at the distribution board.
- This product is suitable for connection to a 220-240Vac 50/60Hz supply.
- This is a **Class II, IP20** rated product and does not require an earth though a terminal marked **E** is provided for continuity.
- The emergency fitting is not suitable for use on a battery supply, trickle or intermittent re-charging circuit.
- The emergency fitting is not protected against supply voltage polarity reversal.
- The recharging device will recharge the battery normally after removal of a battery short-circuit.
- Ensure appropriate personal protective equipment is used where required.
- When cutting holes, drilling or screwing take care not to damage existing wiring or pipework.
- Ensure that any batteries are disposed of appropriately, contact your local recycling authority for further information.

Graphic Options

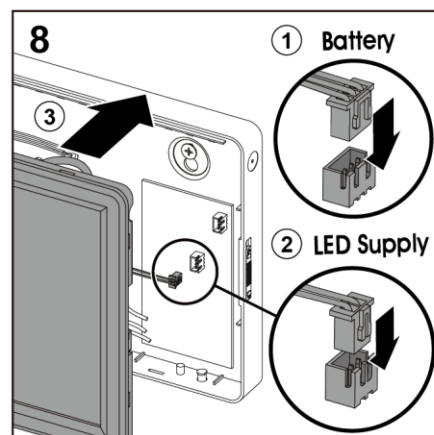
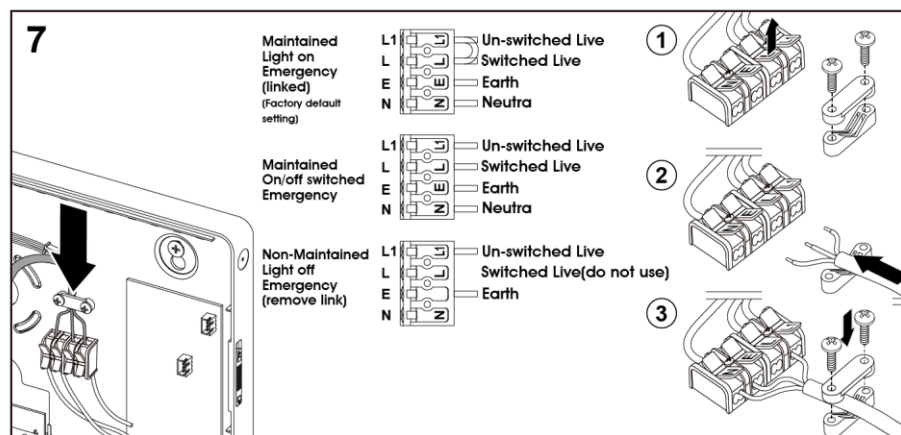
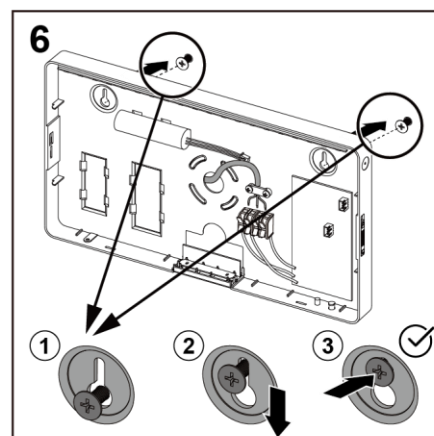
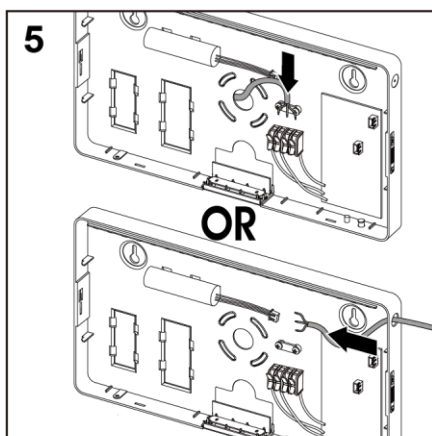
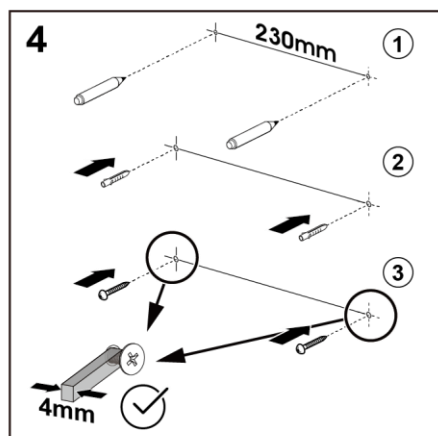
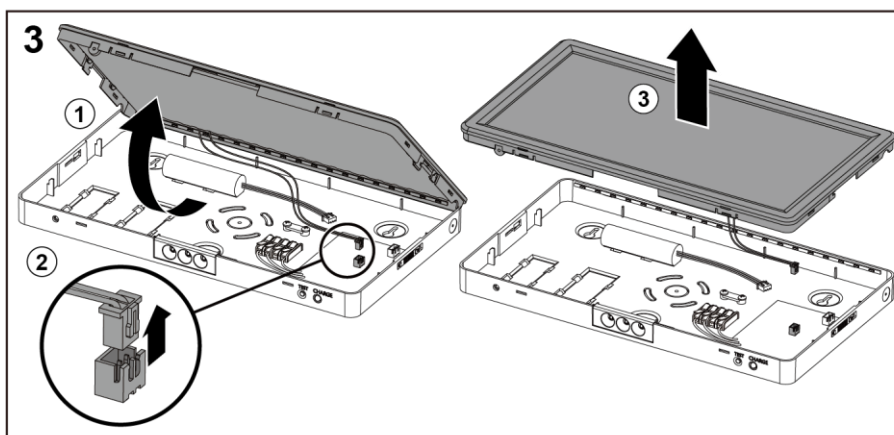
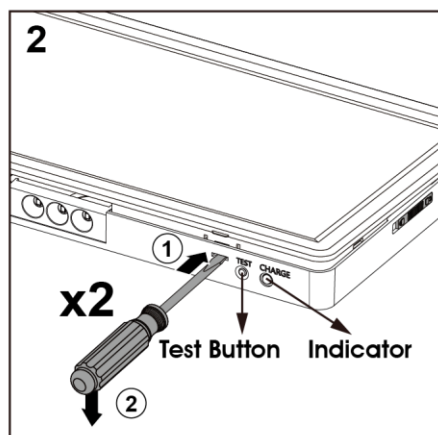
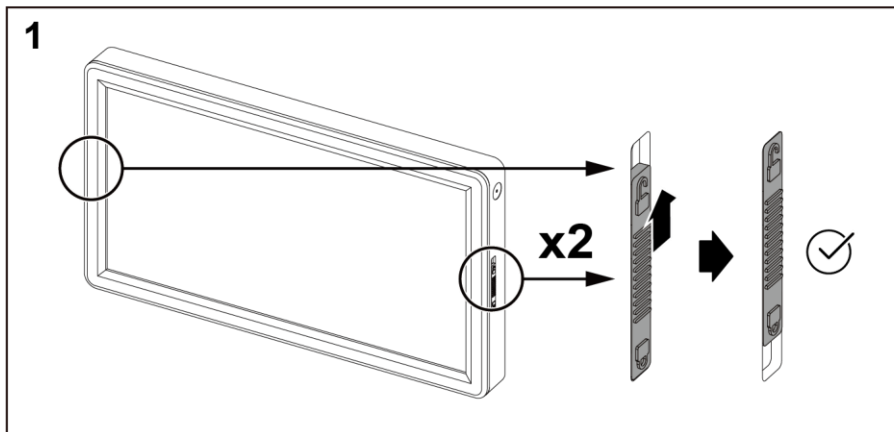
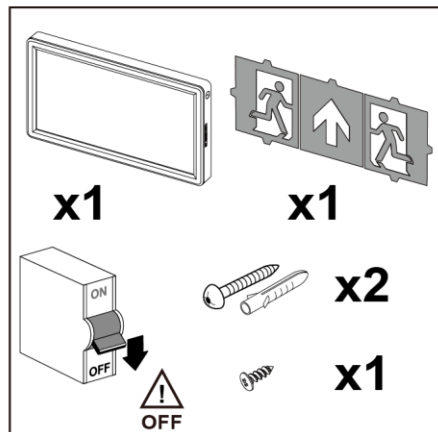
- The luminaire can be used with or without an exit sign graphic sheet. The graphic sheet is split into two parts, the arrow can be positioned as required.
- To remove a graphic sheet from the luminaire, use your fingers to pull down on the top edge of the graphic sheet until it curves and pops out of the top edge, then withdraw the lower edge.
- To fit an exit sign graphic, insert the lower edge into the gap at the base of the diffuser and then gently bend the graphic to fit the edge into the top gap.

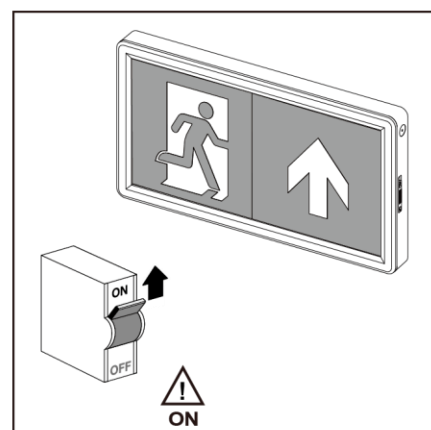
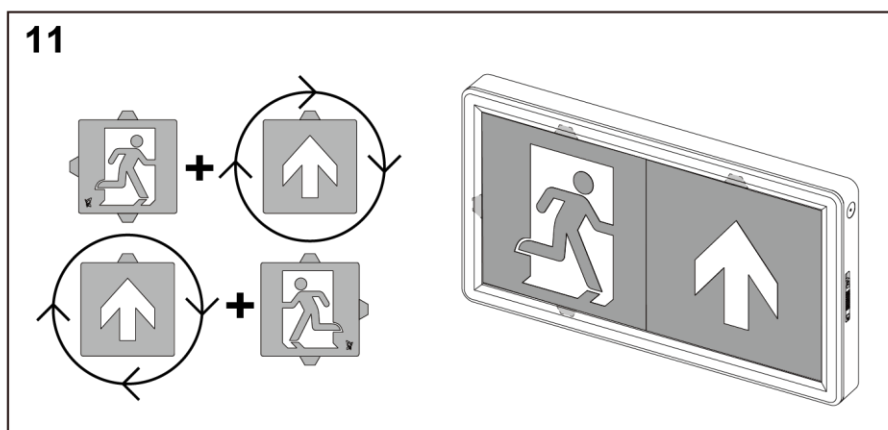
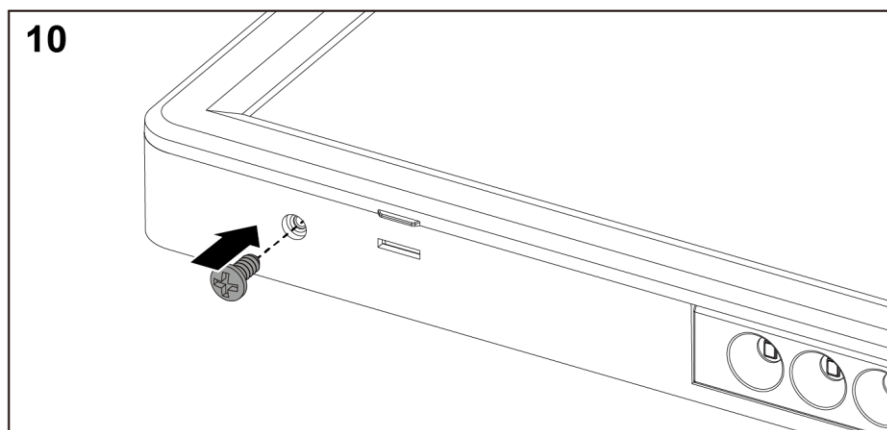
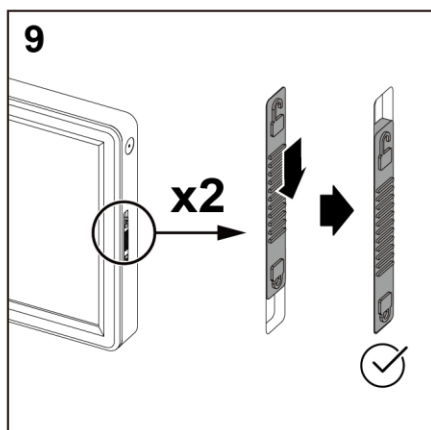
Installation Information

- Referring to the diagram supplied as below for wall installation.
- The luminaire can be used in both **maintained** mode (normal operation and emergency operation) or **non-maintained** mode (emergency operation only) according to the wiring as diagram below.
- Ensure that all electrical connections are tighten with no loose strands and secure any glands as necessary.
- **Ensure battery is connected.**
- Write the commissioning date on the battery label.
- Stick the Maintained or Non-Maintained emergency luminaire label on the luminaire where it can be seen.
- The battery leaves the factory in a charged state but may take up to 24 hours to fully charge for a 3-hour test. Charge for 5 minutes before performing a functional test to ensure there is some charge in the battery.
- There is a button on the lower edge to quickly do a functional emergency test.
- To fully test the emergency function, the supply will need to be turned off.

Battery Replacement

- Turn off and isolate the circuit by removing the fuse or switching the circuit breaker off at the distribution board.
- Remove the luminaire from the mounting bracket.
- Disconnect the battery cable from the socket and remove the old battery.
- Write the commissioning date on the new battery label and connect the battery cable.
- Fit the luminaire to the mounting bracket and secure.
- Reconnect the supply.





The Waste Electrical & Electronic Equipment Regulations (WEEE) requires that products bearing this symbol must not be disposed of with household waste as they may contain substances harmful to the environment. Your Local Authority can provide advice on recycling.